



MapAction

Situation Map 7 May 2008

Cyclone Nargis Myanmar

0 25 50 Km

Nominal Scale 1:1,250,000 at A3 size

Created: 07-05-2008/19:00

Map Doc Num: ma001_mmr_situation_v1_07052008

Projection/Datum: UTM Zone 46N/WGS84

GLIDE Num: TC-2008-000057-MMR

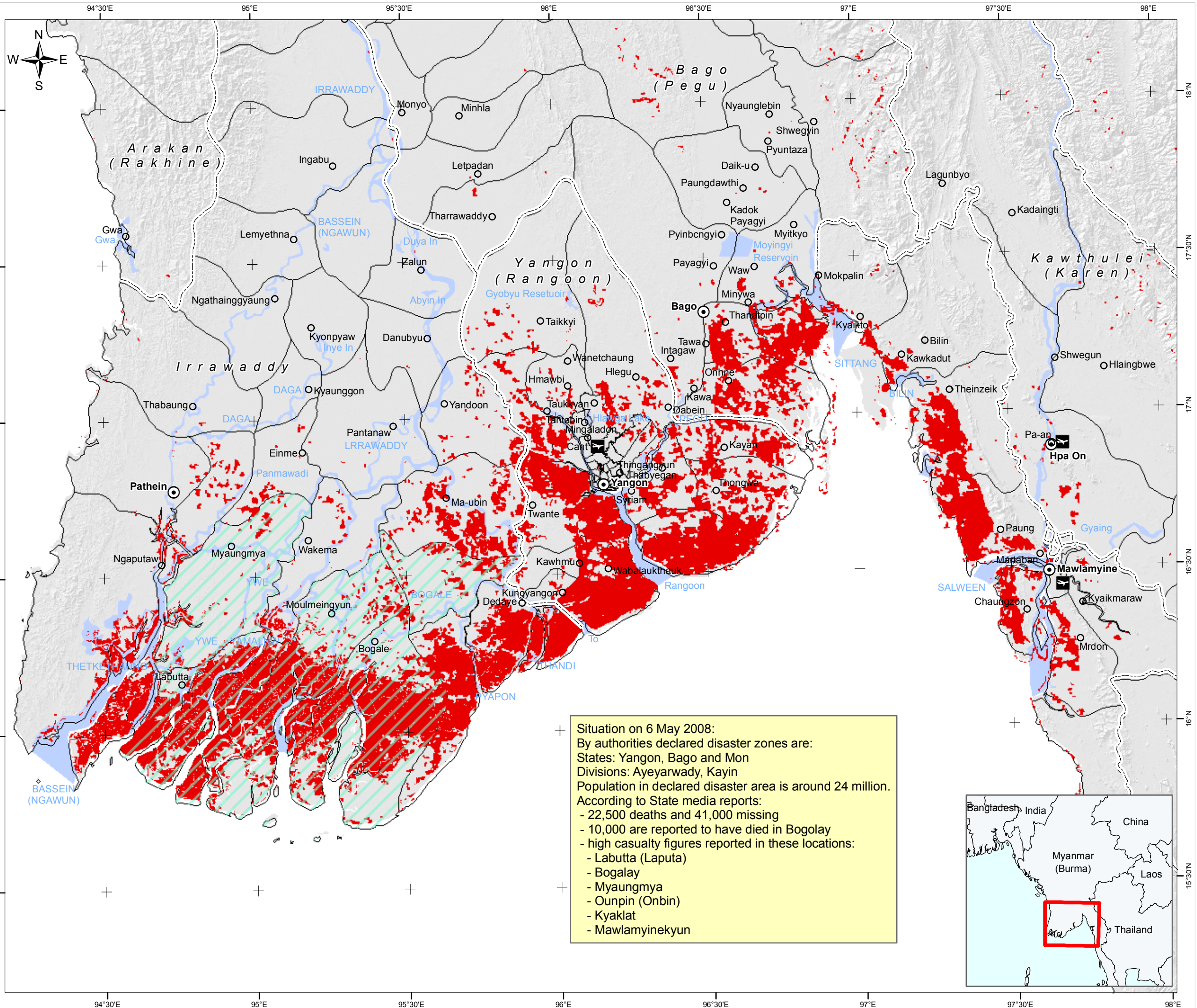
The depiction and use of boundaries, names and associated data shown here do not imply endorsement or acceptance by MapAction.

- State Capital
- Town
- Airport
- Flood Water
- State and Division Boundary
- reported high casualties
- inland water
- Township Boundary

Data Source: Flood Water: UNOSAT, 05May2008, Administrative Boundaries: UNOCHA, reported high casualties: UNOCHA, Bangkok.

MapAction Operations Team
Email: myanmar@mapaction.org
Website: www.mapaction.org

MapAction is grateful for the support of the Vodafone Group Foundation and DFID



Situation on 6 May 2008:
 By authorities declared disaster zones are:
 States: Yangon, Bago and Mon
 Divisions: Ayeyarwady, Kayin
 Population in declared disaster area is around 24 million.
 According to State media reports:
 - 22,500 deaths and 41,000 missing
 - 10,000 are reported to have died in Bogalay
 - high casualty figures reported in these locations:
 - Labutta (Laputa)
 - Bogalay
 - Myaungmya
 - Ounpin (Onbin)
 - Kyaklat
 - Mawlamyinekyun

